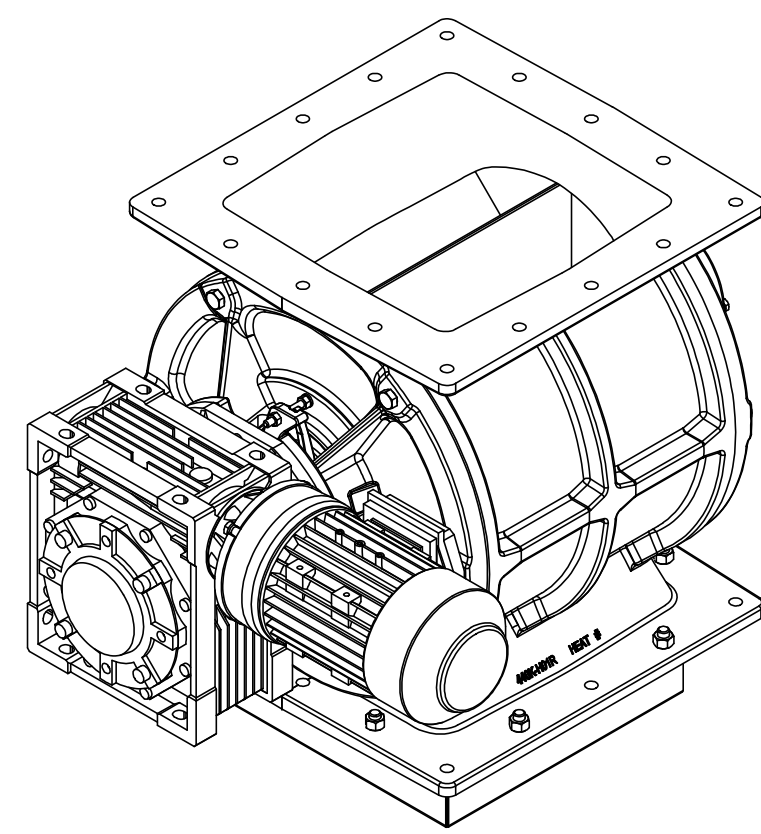
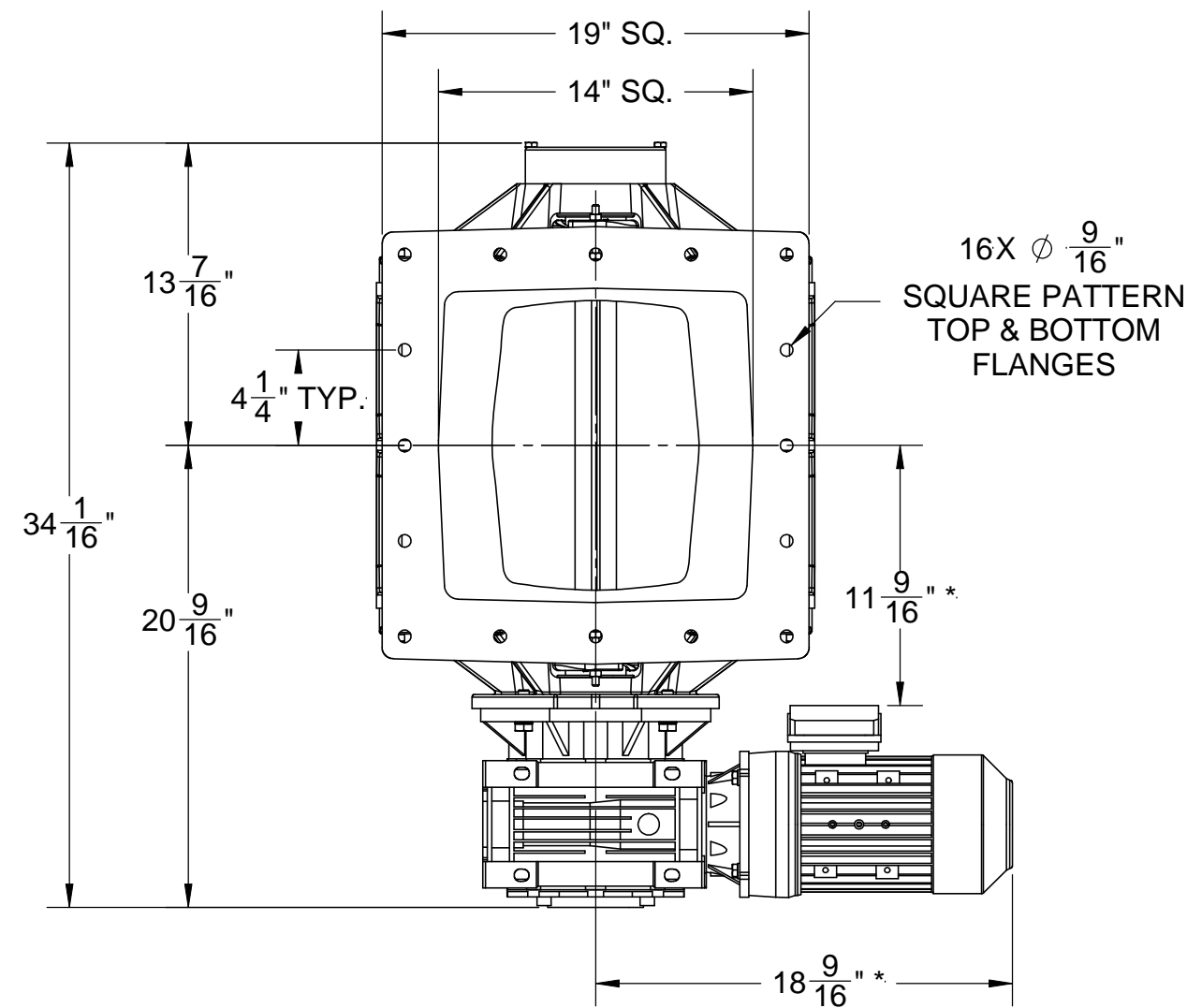
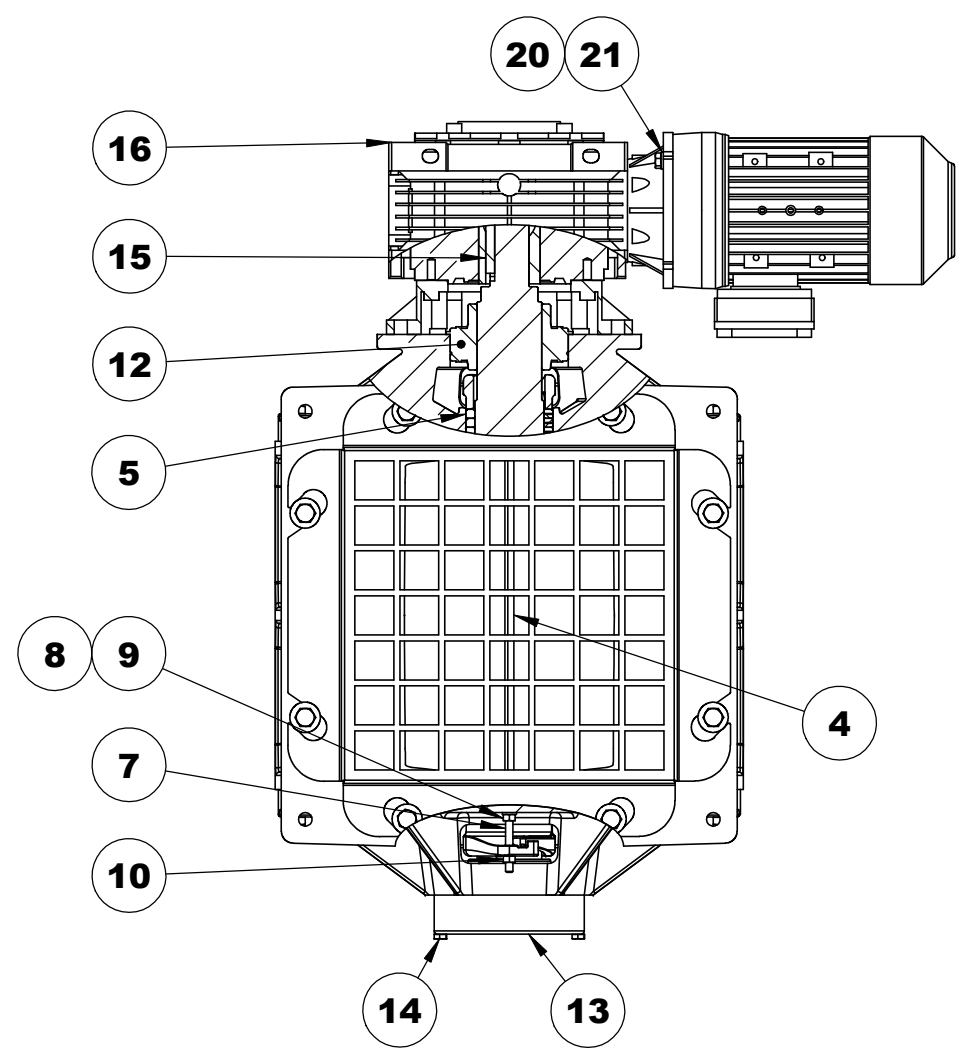
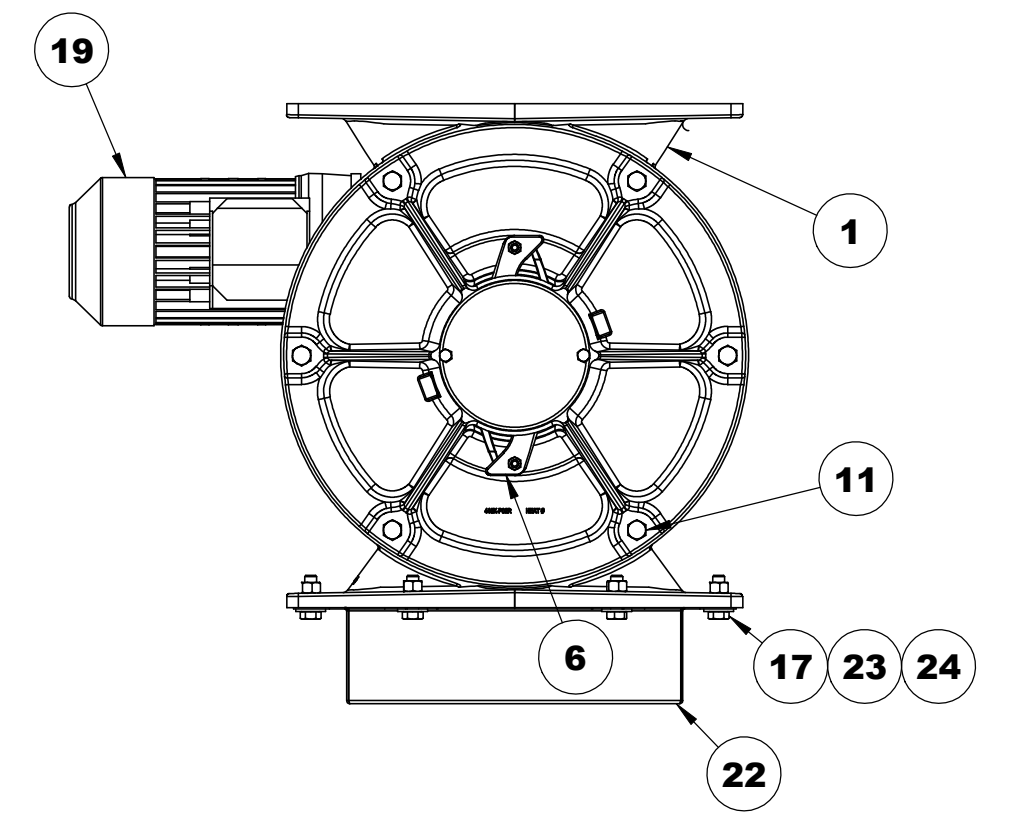
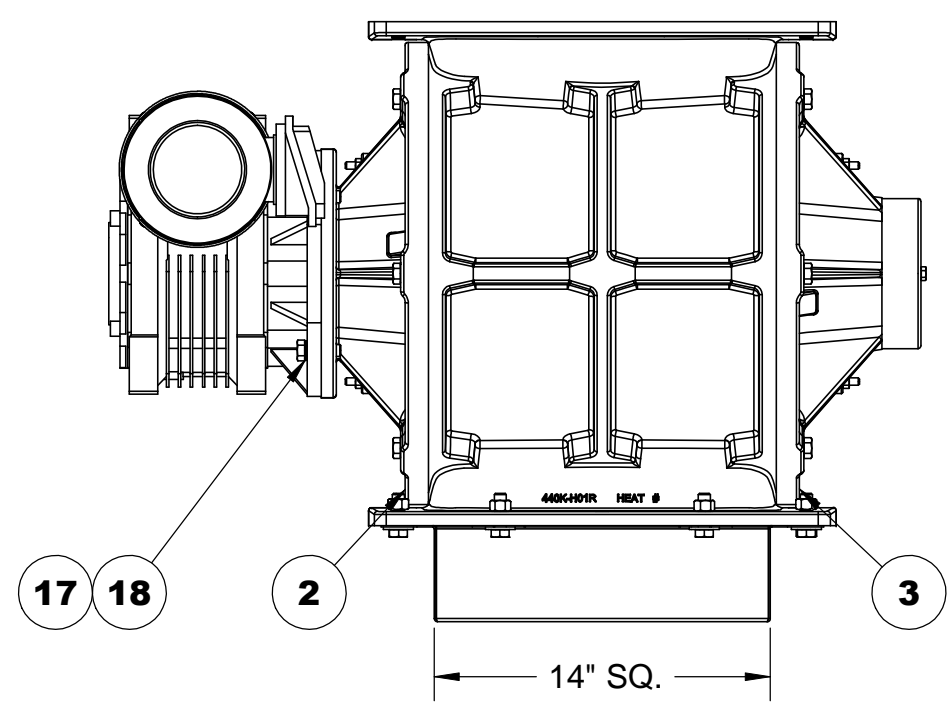
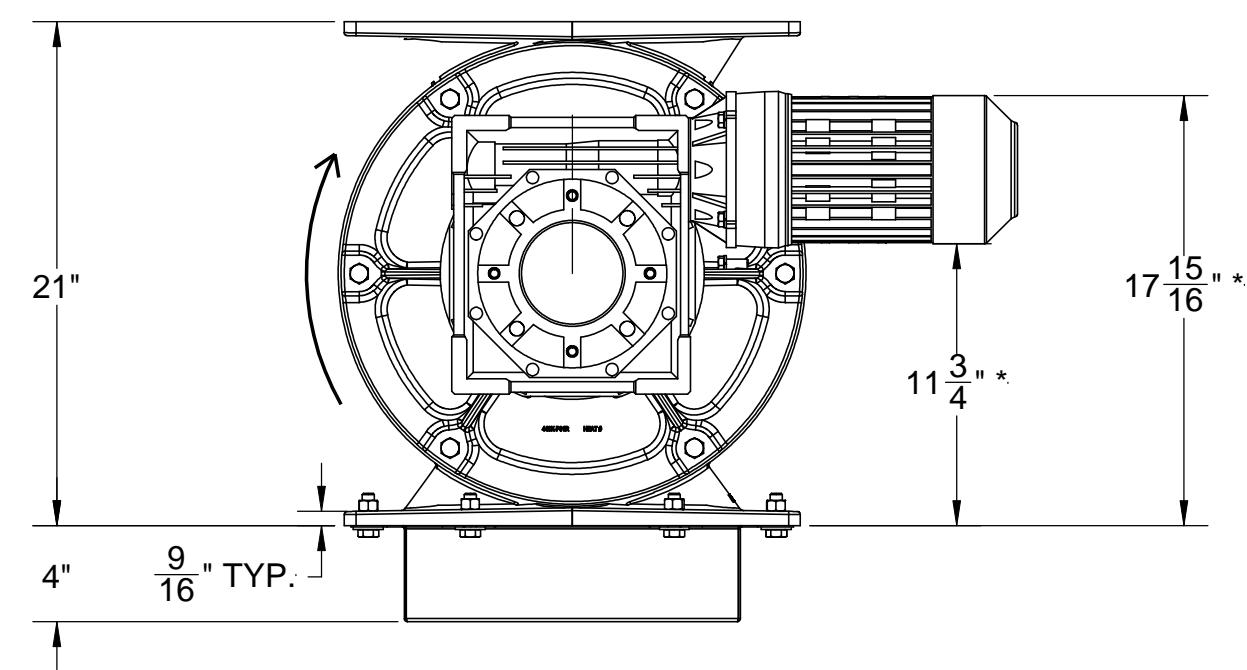


F
E
D
C
B
A



ITEM NO.	PartNo	Description	QTY.
1	440K-H31	14" UDV SQUARE HOUSING, CI	1
2	440K-P31	14" UDV DRIVE HEADPLATE, CI	1
3	440K-P32	14" UDV BLIND HEADPLATE, CI	1
4	440K-RD001-T160	14" DDV ROTOR 8VOEBV, CS	1
5	450BA196	PACKING RING, 3/8" SQ., 2 7/8" ID, ARAMID	6
6	440K-N01	14" UDV PACKING NUT, CS	4
7	450JC079	5/16-18 X 3" STUD SS	4
8	FS	5/16" LOCK WASHER	4
9	FS	5/16-18 HEX NUT	4
10	450JH669	5/16-18 CENTERLOCK HEX LOCKNUT, ZP	4
11	FS	1/2-13 X 1 3/4" HEX HEAD BOLT	12
12	450AA006	BEARING	2
13	440K-C05	14" UDV BE BEARING CAP, AL	1
14	FS	5/16-18 X 1 3/4" HEX HEAD BOLT	2
15	450JP031	.375" x .375" x 5"L, KEY, CS	1
16	450GB680	GEARBOX, 80:1 1.625 BORE 140TC	1
17	FS	1/2-13 X 1.5" HEX HEAD BOLT	12
18	450JH554	1/2" X 3/4" NORD LOCK WASHER	4
19	450H-1840	2 HP 1800RPM TEFC 208-230/460-60-3 145TC	1
20	FS	3/8-16 X 1" HEX HEAD BOLT	4
21	FS	3/8" LOCK WASHER	4
22	430K-1051	14" DISCHARGE GUARD	1
23	FS	1/2" FLAT WASHER	8
24	FS	1/2-13 HEX NUT	8



NOTE:
 1) DESIGN BASED ON 70-160 DEG. F. OPERATING TEMPERATURE.
 2) PAINT STANDARD BLACK ENAMEL.
 3) * MOTOR DIMENSIONS BASED ON STANDARD MOTOR.

REVISIONS				
REV.	DESCRIPTION	DATE	DB	AP
OUR S.O. #	NAME	DATE		
REF S.O. #	DRAWN BY: SC	7/26/11		
REF DWG.	CHECKED BY:			
	ENG APRV.: GS	1/9/12		
PROPRIETARY AND CONFIDENTIAL THE INFORMATION CONTAINED IN THIS DRAWING IS THE SOLE PROPERTY OF Wm. W. Meyer & Sons, Inc. ANY REPRODUCTION IN PART OR AS A WHOLE WITHOUT THE WRITTEN PERMISSION OF Wm. W. Meyer & Sons, Inc. IS PROHIBITED.		Wm. W. Meyer & Sons Inc. LIBERTYVILLE, IL.		
TITLE: 14" SQUARE DDV ROTARY VALVE, CAST IRON 8 VANE OPEN END MILD STEEL BEVELED ROTOR 2 HP, 22 RPM		DWG. NO. 442K-0001		
PART WEIGHT: 577 LBS		SCALE: 1:8		SHEET: 1 OF 1

8
7
6
5
4
3
2
1